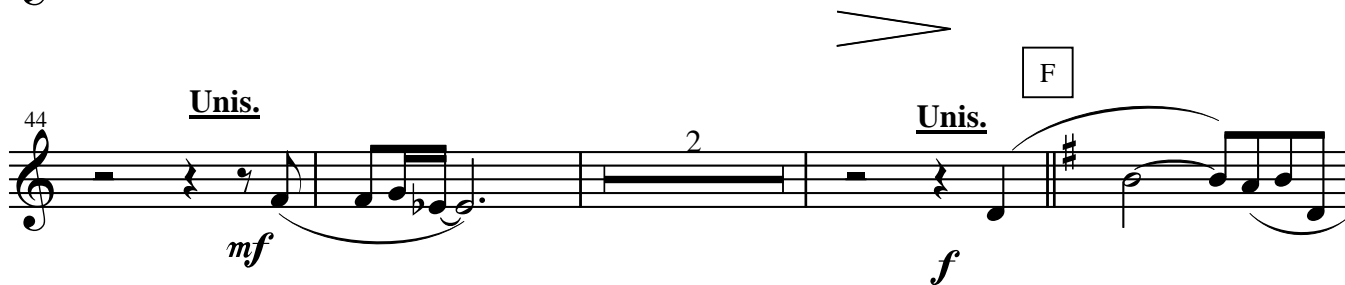
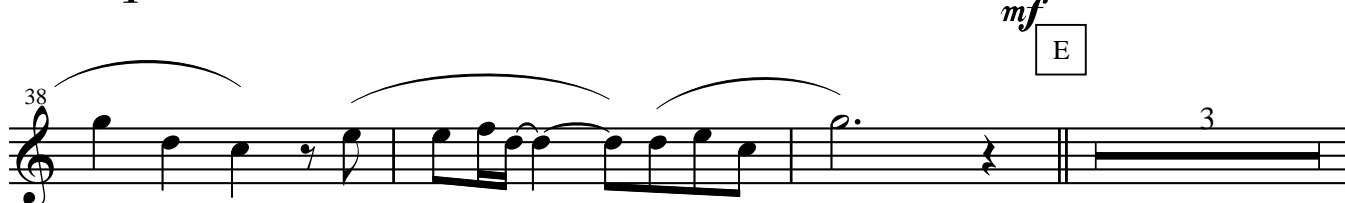
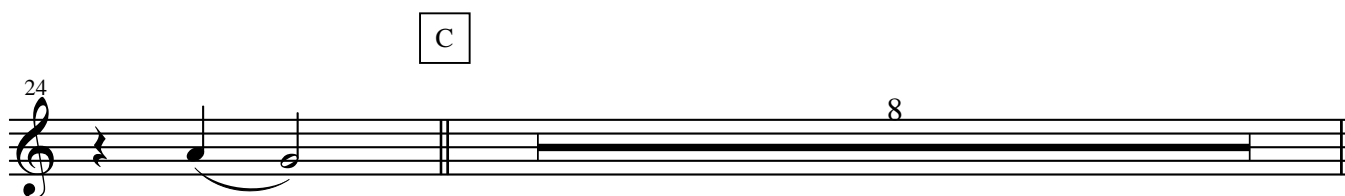


Trumpet 2
(Flugelhorn)

A Song for Japan (Steven Verhelst)

arr. Nario Izumi

♩ = 70



54 G Tempo Primo

rit.

Detailed description: Musical staff 54-58 in treble clef, key of D major. It contains a melodic line with eighth and sixteenth notes, some beamed together. A slur covers measures 54-58. A 'rit.' marking is placed below measure 57.

59

Detailed description: Musical staff 59-62 in treble clef, key of D major. It continues the melodic line from the previous staff with various note values and slurs.

63 H ♩ = 74

2 7

Detailed description: Musical staff 63-67 in treble clef, key of D major. It features a whole rest in measure 63, followed by a double bar line and a key signature change to D minor. Measures 64-67 contain a whole note, with a '2' above measure 64 and a '7' above measure 67.

Unis. I

72 *mf*

Detailed description: Musical staff 72-76 in treble clef, key of D minor. It begins with a whole rest in measure 72, followed by a melodic line. A slur covers measures 73-76. The dynamic *mf* is marked below measure 72.

77 *mf* *f* J Tempo Primo

2 Hr.

Detailed description: Musical staff 77-81 in treble clef, key of D minor. It starts with a whole rest in measure 77, followed by a melodic line. A slur covers measures 78-81. The dynamic *mf* is marked below measure 77, and *f* is marked below measure 80. A '2' is above measure 77, and 'Hr.' is above measure 80. A crescendo hairpin is shown below the staff between measures 77 and 80.

82 Solo *mf*

Detailed description: Musical staff 82-85 in treble clef, key of D minor. It begins with a whole rest in measure 82, followed by a melodic line. A slur covers measures 83-85. The dynamic *mf* is marked below measure 82.

86 *mf*

3

Detailed description: Musical staff 86-89 in treble clef, key of D minor. It starts with a whole rest in measure 86, followed by a melodic line. A slur covers measures 87-89. The dynamic *mf* is marked below measure 86. A '3' is above measure 86. A crescendo hairpin is shown below the staff between measures 86 and 89.